

7.1 - Institutional Values and Social Responsibilities

7.1.1 - Measures initiated by the Institution for the promotion of gender equity during the year

INSTITUTIONAL RESPONSE

Sree krishna College of Pharmacy is devoted to promoting gender equality and providing a safe and secure atmosphere , which is free from abuse, or ragging for all students. Gender equality is considered to be existing in places where females and males enjoy the same rights and opportunities across all sectors of society, including participation and economic decision making. The campus is monitored by 24 CCTV cameras to ensure safety of students.. Faculties are frequently involved in advising students about personal issues, career recommendations, and other professional matters and they are also conduct awareness programmes. Female teaching staff members of the college can contact the girls at regular intervals to identify and address the problems faced by them. When both genders are sick, they are sent to common rooms. Our Institute have Gender Sensitization cell , grievance redressal committee, Women Cell and Guidance and Counselling cell. Representations of girls are ensured by their appointment in all the committees constituted by the institute for smooth functioning.: Gender equity promotion programs have been regularly organized by the institution.

Women Empowerment cell

The institution has an active “Women Empowerment cell” which ensures that various events/expert lectures are held for benefit of all students. Majority of the programmes, boys are also permitted to attend since the institution felt that they need to be sensitized too for benefit of females in their life (Mother, sister, friend etc). Through this practice, the boys are taught to be more sensitive towards ladies and the issues they face, by employing this practice the institution has tried in its own way to break the shackles of patriarchal society existing in rural area and to provide equal opportunity to girl child in order to bring her to the forefront.

Women's empowerment and gender equality are one of the primary concerns at Sree krishna College Of Pharmacy And Research Centre, Parassala . We practice to bring a positive change in the attitude and support equity among genders within the institute and in our outreach.





Annual gender sensitization plan is as follows:

Objective:

To promote inclusiveness, tolerance, harmony and women's empowerment among the students and staff.

- Conduct activities like Blood donation camp, Aids awareness, etc in order to give back to the society

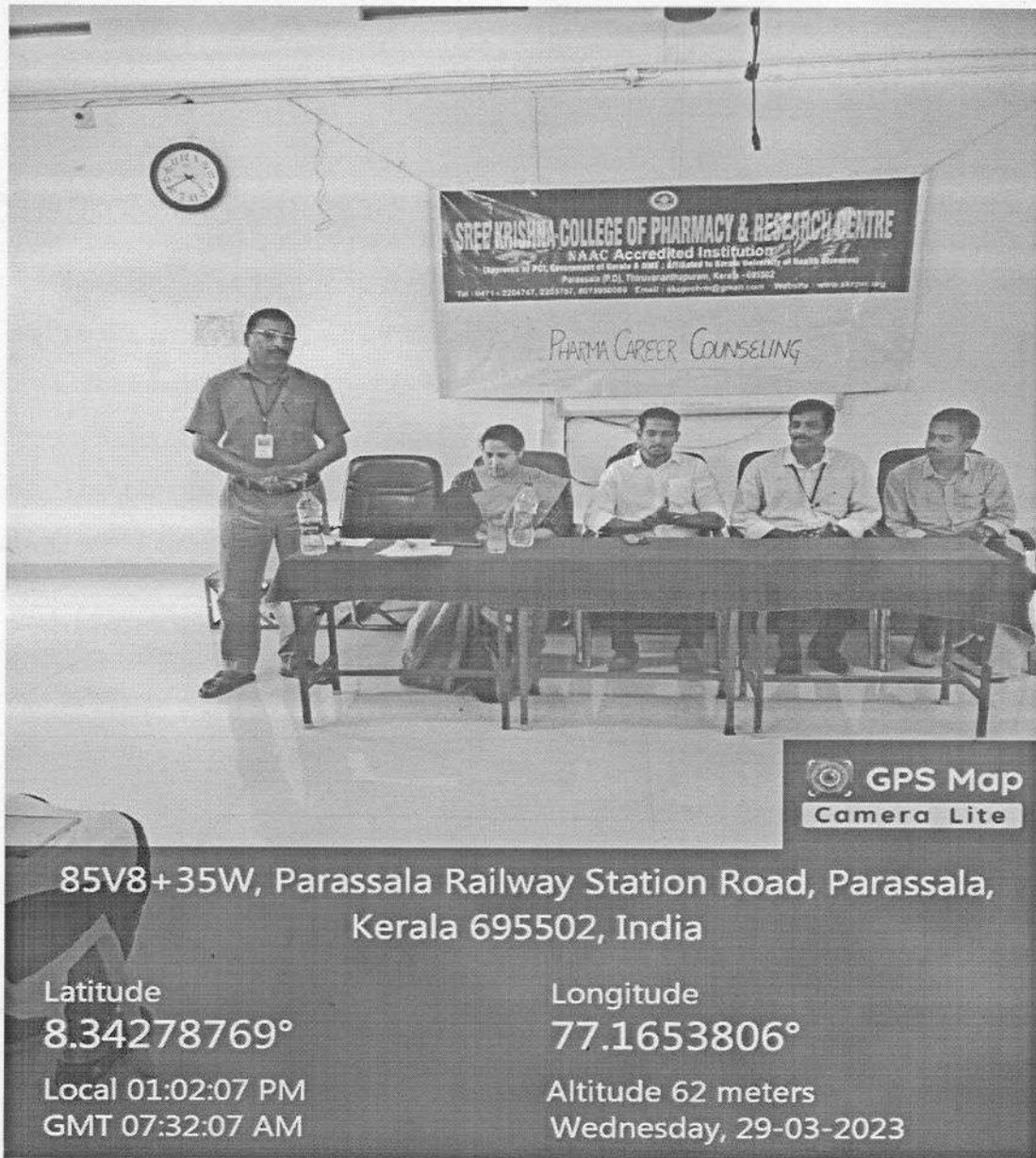
- Separate hostels for men and women with dedicated wardens.



CC TV

Counseling

- Formal and informal avenues for counseling male and female students and staff for academic and other issues/problems.
- Class and Proctorial Committees are available for counseling of both males and female students.
- Grievance Redressal Committees for staff and students
- Others – Entrance Exam Counseling, Orientation Programmes for Teachers and Students, Medical Counseling, Moral Counseling, Career Counseling.



Common Rooms

- In most of the Departments, common rooms have been allocated for men and women, which also facilitate meetings and discussions.

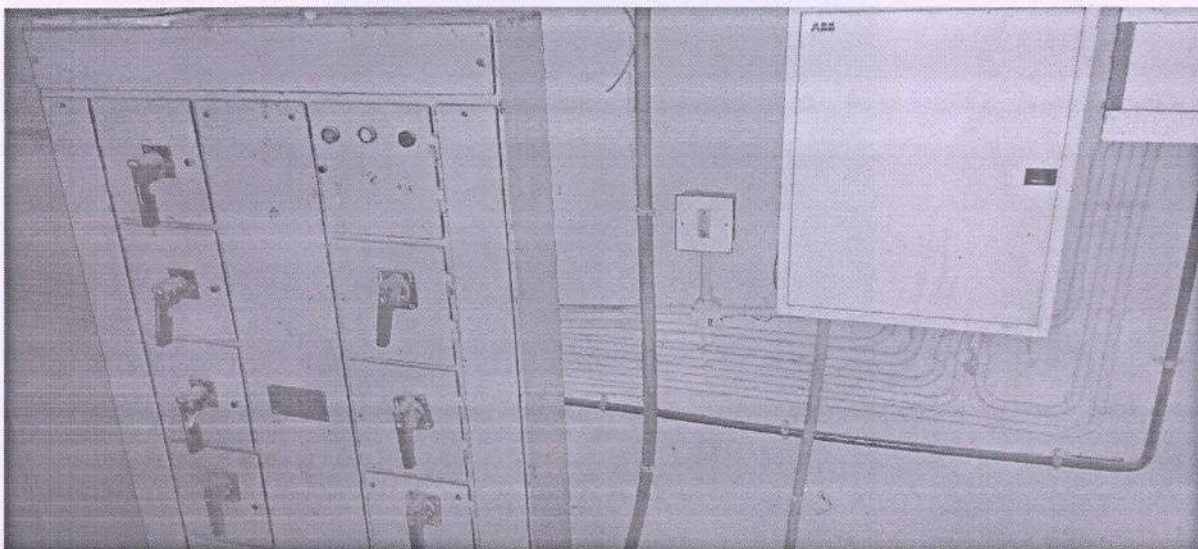
Other measures of Gender Sensitization include

- Curriculum and Coursework.
- Co-curricular activities.
- Enrolment of more women students & staffs

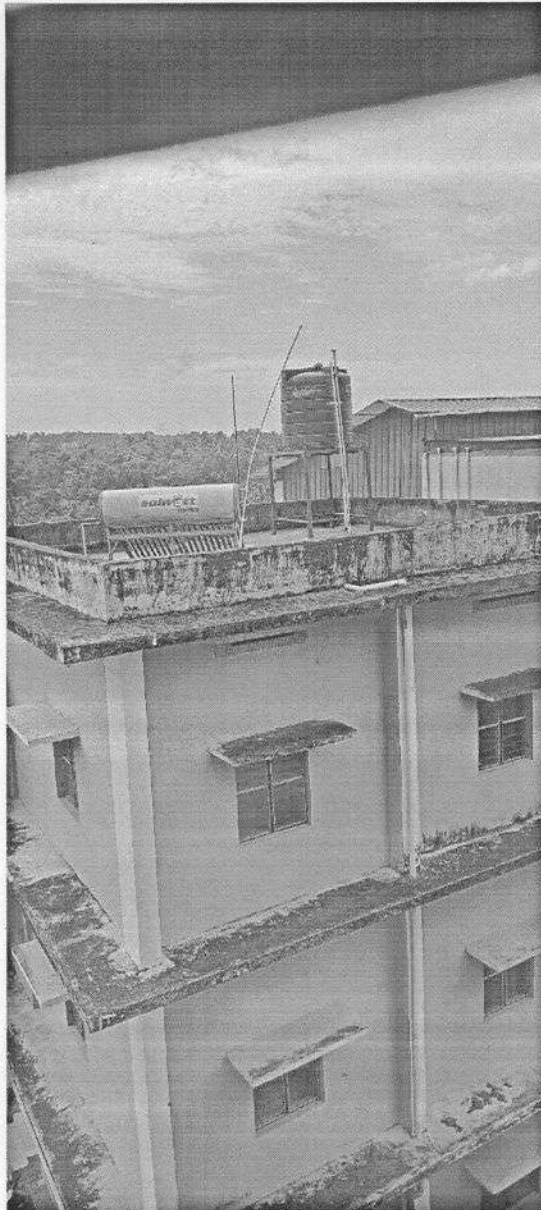
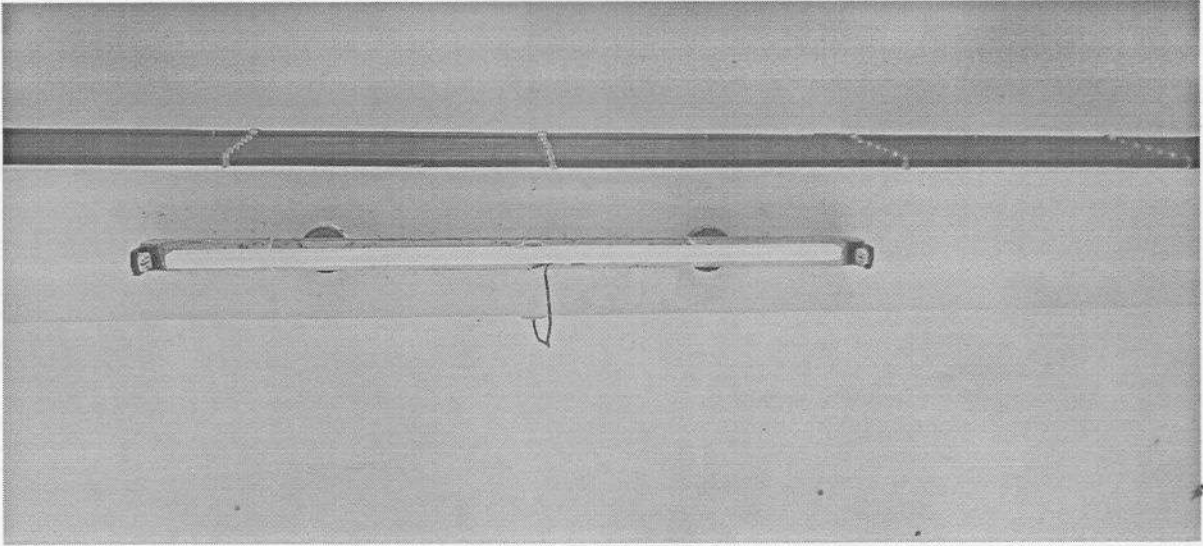
7.1.2 - The Institution has facilities for alternate sources of energy and energy conservation measures

- a. Solar energy**
- b. Biogas plant**
- c. Wheeling to the Grid**
- d. Sensor based energy conservation**
- e. Use of LED bulbs/ power efficient equipment**

A. 4 OR All of the above



Handwritten signature in green ink.





7.1.3 - Describe the facilities in the Institution for the management of the following types of degradable and non-degradable waste (within 200 words)

- **Solid waste management**
- **Liquid waste management**
- **Biomedical waste management**
- **E-waste management**
- **Waste recycling system**
- **Hazardous chemicals and radioactive waste management**

Sustainable environment in college campus impacts students lives positively so our college management has taken efforts to develop the campus on green concept particularly focusing on energy conservation, solid waste management , liquid waste management, plantation of trees, laying of lawns, etc. Solid waste management: Sreekrishna college of pharmacy and Research Centre practices in collection and separation of Solid materials by providing waste bins separately for dry and wet waste at every corner of the corridor, class rooms, wash rooms and common room. The collected waste materials was destroyed by incineration process . Our management has given clear instructions to the students and staffs to reduce the use of plastic and to encourage the use of steel utensils .The Leftover food from the college canteen and hostel will be collected and send to our biogas plant which produces bio-gas for our needs.+ Liquid waste management Improper liquid waste disposal can inflict grave damage on the surrounding environment. It can disrupt the balance of aquatic ecosystems and kill marine organisms. Or it can seep into the soil, kill plants, destroy natural habitats and cause biodiversity loss and it also make people seriously ill . Our institute practices separation of waste water collecting from wash rooms ,laboratories, laundry and kitchen sink wastes.







7.1.11 - Institution celebrates / organizes national and international commemorative days, events and festivals

The college believes in celebrating events and festivals in college. It is an integral part of learning and building a strong cultural belief in a student. The College makes tremendous efforts in celebrating the national and international days, events and festivals throughout the year.

Christmas celebration:



NSS camping:



Handwritten signature

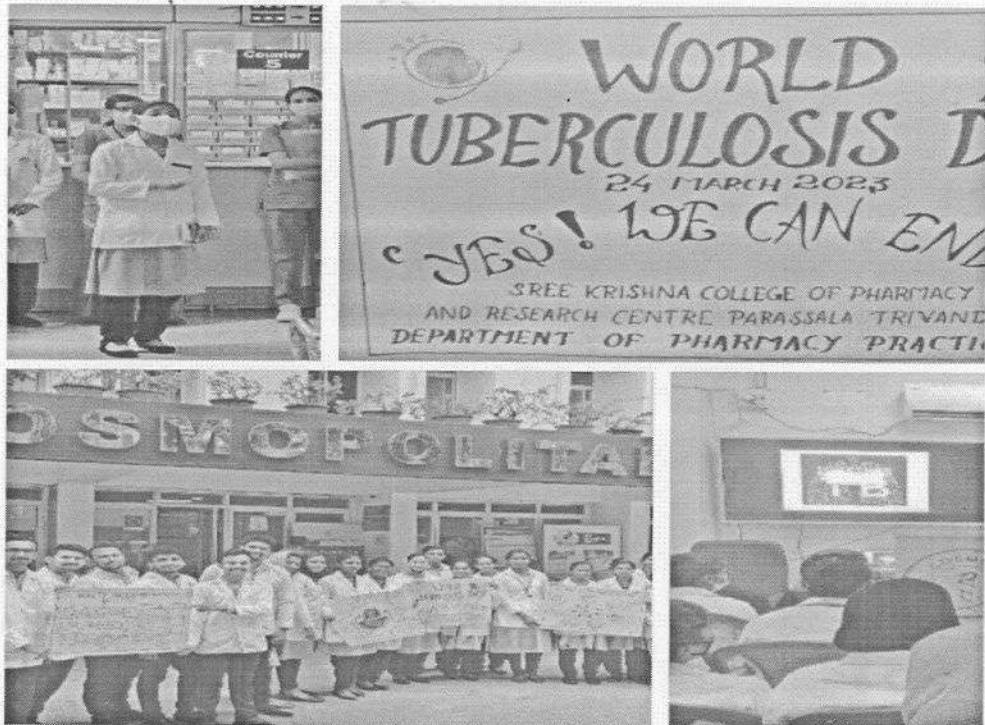


Skill enhancement activities:





World Tuberculosis Day:



7.2 - Best Practices 7.2.1 - Describe two best practices successfully implemented by the Institution as per NAAC format provided in the Manual.

1. MENTORING SYSTEM FOR STUDENTS Considering the student-teacher ratio in classrooms, it is difficult at times to give personal attention to students in class. One solution therefore is a 'Mentor' who can form the bond with students in the true sense. Mentoring is required for students to achieve emotional stability and to promote clarity in thinking and decision making for overall progress. Each teacher is assigned around 7-8 students for the complete duration of their study. They meet at least once a month to discuss, clarify and share various problems which may be personal or academic, etc. The mentors encourage the students to participate in cocurricular and extracurricular activities and sports. Their academic performance and other activities are all recorded. The mentors also keep in touch with the parents on their attendance, test performance, fee payment, examinations etc on weekly basis. The mentors also counsel the students in need of emotional problems. When the students have any problem in any department either with the staff or with work completion the mentors speak with the respective staff and sorts out the problem. Mentors take special care of weak students, who are given advice on how to study, prepare a time table for study and clarify the doubts and also given notes to study\

2. TEACHING LEARNING PROCESS

To ensure the completion of syllabus according to the academic calendar of College. To improve pass percentage, average marks in each semester and enhance the number of ranks bagged by the college at the university level examinations Academic calendar is uploaded on the website for information to students, teachers and others. On the basis of that, every faculty prepares the academic planner in the form of course file which is audited by the department head. The heads of different departments monitor the pace of coverage of the syllabus. Increased attendance in the classes Improvement in results. Timely Feedback is obtained from students regarding the content delivery by different teachers. Assignments, tests and evaluation are conducted at scheduled dates to improve performance in the semester – end examinations.



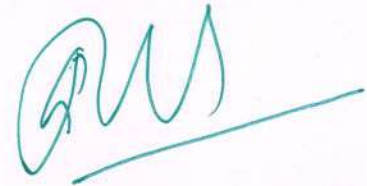
7.3.2 - Plan of action for the next academic year Sree krishna college of pharmacy and research centre has identified the following plans of action for the next academic year.

To facilitate continuous upgradation of knowledge and use of technology by both the students and teachers. To fulfil its social obligation in terms of formal and informal education, dissemination of knowledge, organising programmes and activities for the benefits of the community and other stakeholders. Improving the result than previous years, conducting campus interview for students by collaborating with various industries & organizations. 100 % placement & encouraging for higher studies. To create awareness and initiate measures for protecting and promoting environment.. To give additional thrust to campus placement initiatives. To identify talent among students for various sports and cultural activities. IQAC intends to conduct activities that will help students and staff to develop these skills.

A handwritten signature in blue ink, consisting of stylized initials and a long horizontal line extending to the right.

7.3 - Institutional Distinctiveness

7.3.1 - Portray the performance of the Institution in one area distinctive to its priority and thrust within 200 words We believe that college life is not all about academics, games, friends, and fun. It is also about learning to interact with other people, being aware of social, environmental and gender issues, and inequities in the society. We provide an opportunity to every student to contribute to make the society in which they live a better place and to grow as better individuals. The Sree Krishna College of Pharmacy and Research Centre has committed itself to the task of inculcating social values and responsibilities in its students. Along with other sports cultural and technical activities, the NSS unit plans activities like eye check up for the public in Poozhikunnu planting of trees and field visits to expose the students to the present issues in our society..

A handwritten signature in blue ink, consisting of stylized initials 'SK' followed by a horizontal line.